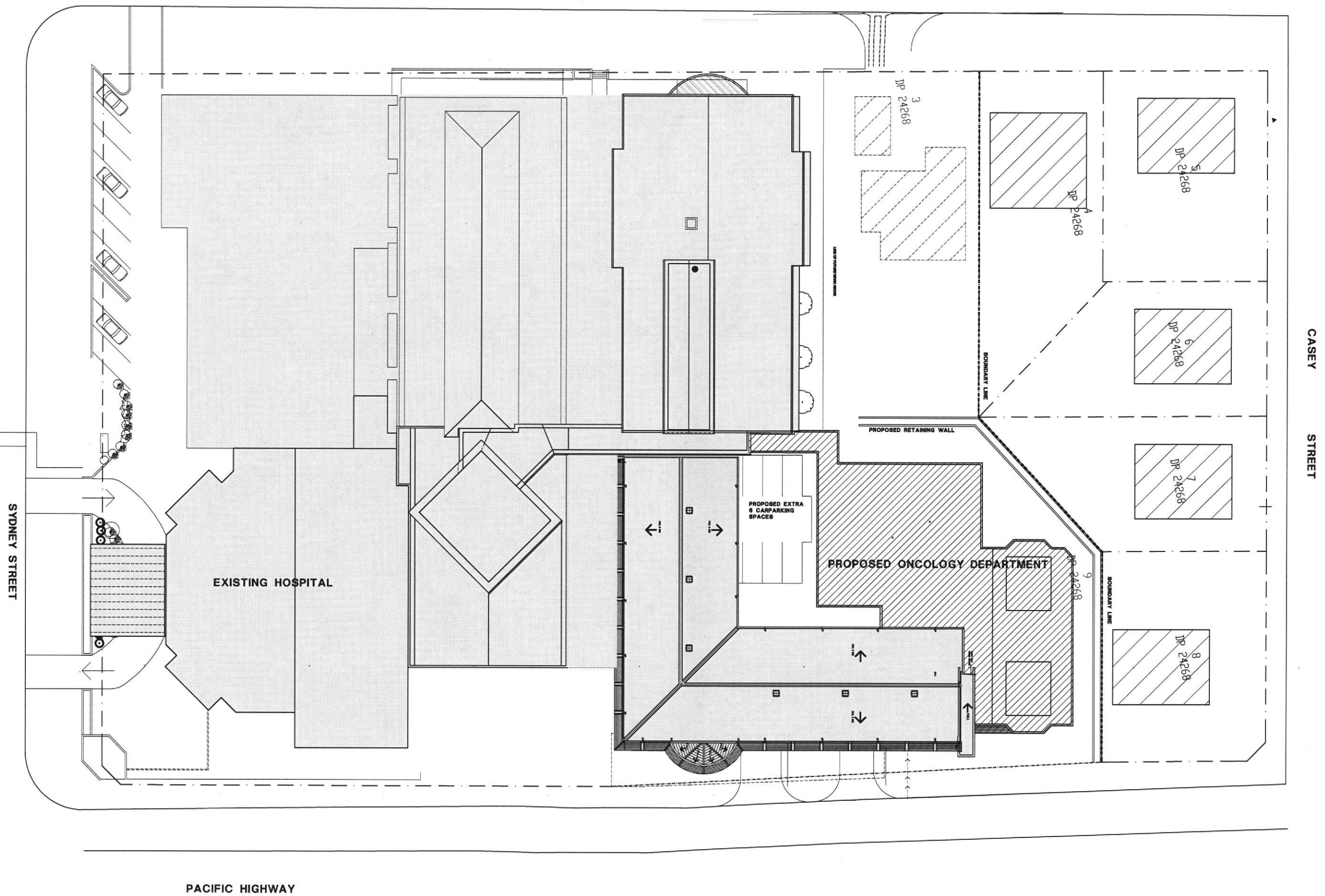


O'BRIEN STREET



EXISTING HOSPITAL

PROPOSED EXTRA
6 CARPARKING
SPACES

PROPOSED ONCOLOGY DEPARTMENT

PROPOSED RETAINING WALL

JP 24268
3

JP 24268
5

JP 24268
6

JP 24268
7

JP 24268
8

JP 24268
9

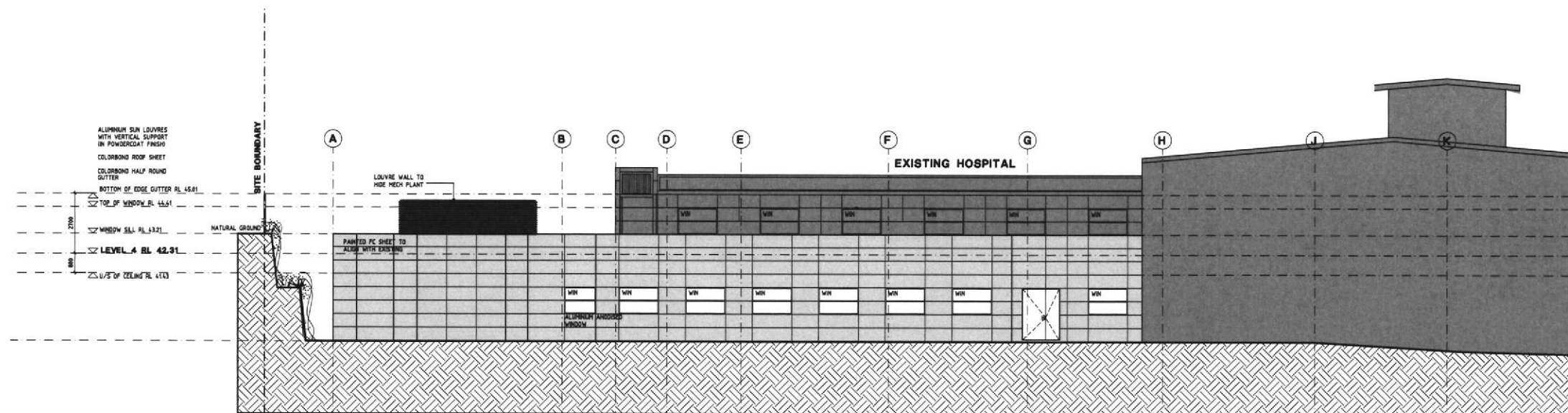
BOUNDARY LINE

BOUNDARY LINE

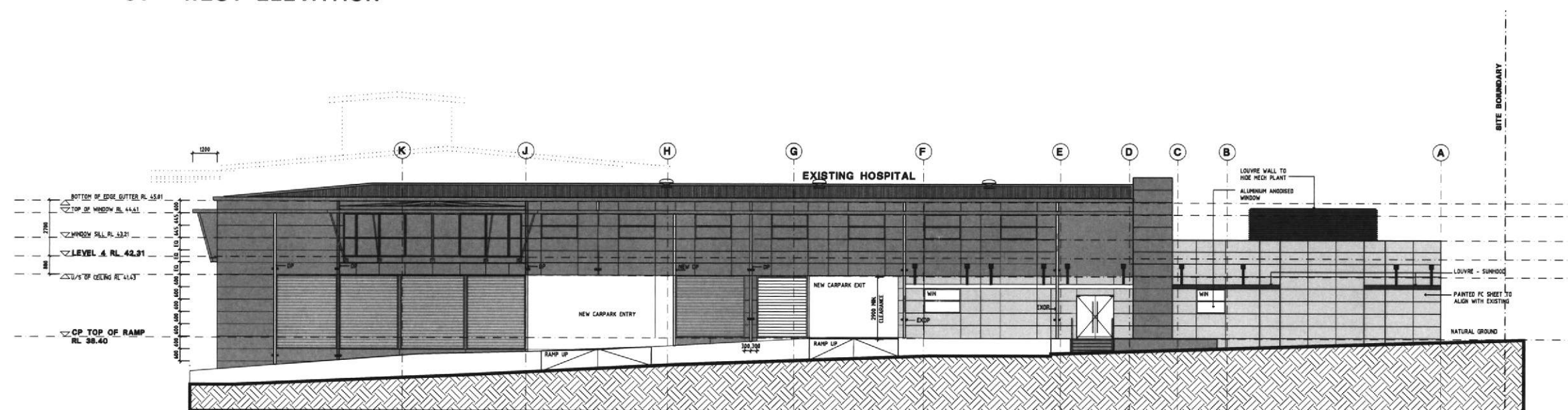
CASEY STREET

SYDNEY STREET

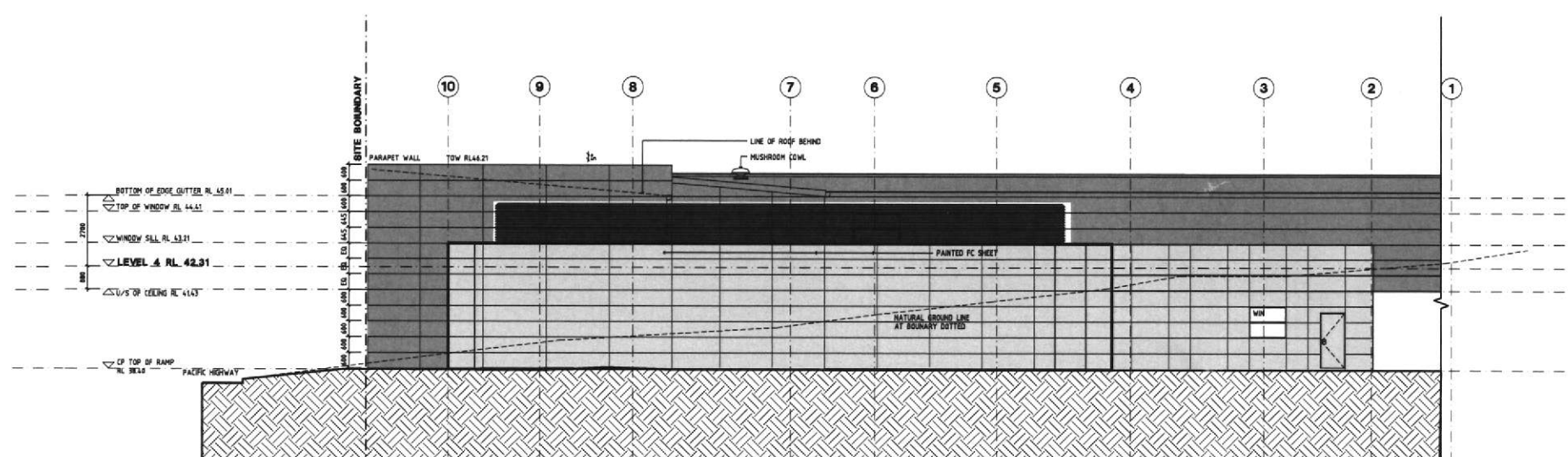
PACIFIC HIGHWAY



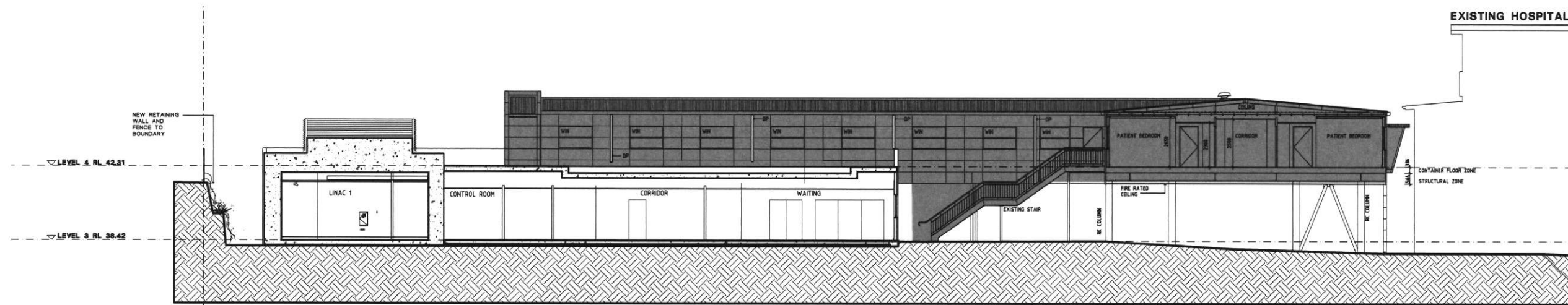
01 - WEST ELEVATION



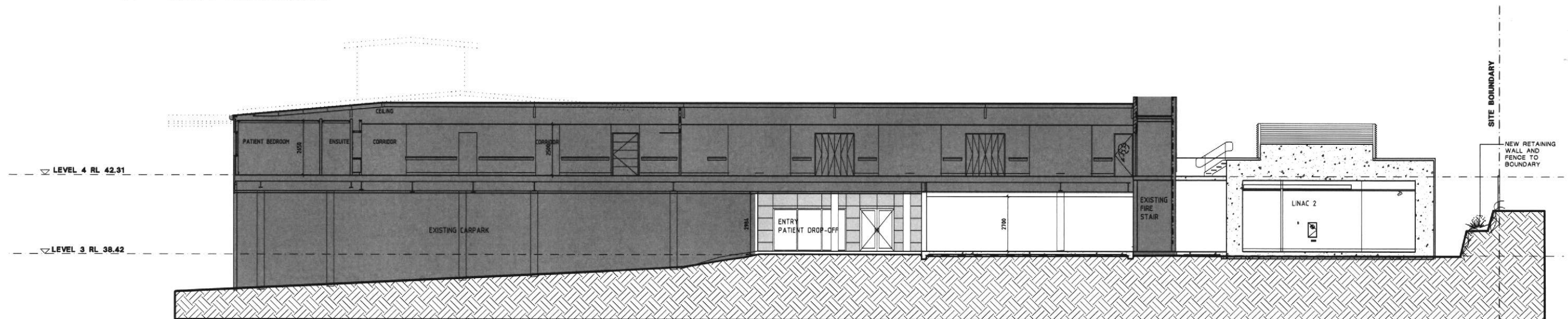
02 - EAST ELEVATION



03 - NORTH ELEVATION (PARTIAL)



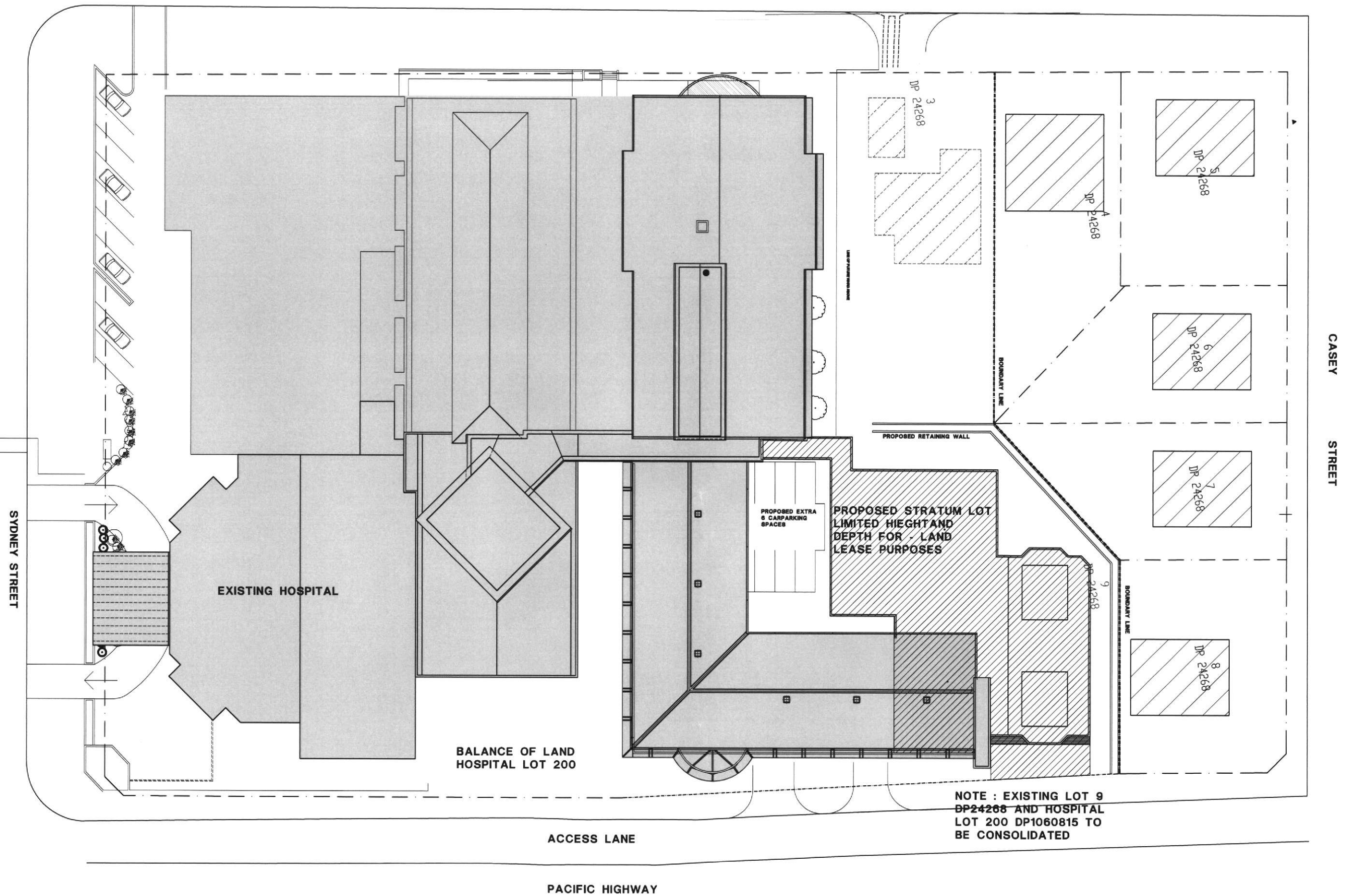
01 - WEST ELEVATION



02 - EAST ELEVATION



03 - NORTH ELEVATION (PARTIAL)



Project :

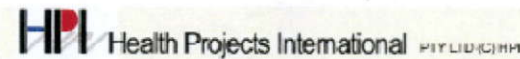
Lake Macquarie Private Hospital - Radiation Oncology

Milestone: **Masterplan**

External Finishes Schedule

Issue No: 1

Issue Date: 14 Jun 2012





Health Facility Planner :

Lake Macquarie Private Hospital - Radiation Oncology (Milestone: Masterplan)

Project Products Legend

Fabric

Colorbond



Product Code				Sample
CLB-2982	Manufacturer: Colorbond Steel	\$ per unit:	Selection: To match existing.	
	Product Name: Colorbond	Unit:	Remarks: External colorbond colour to Gutter and Roof.	
	Availability:			
CLB-3095	Manufacturer: Colorbond Steel	\$ per unit:	Selection: Windspray	
	Product Name: Colorbond	Unit:	Remarks: Down Pipes and Brackets.	
	Availability:		External Guttering.	

Lake Macquarie Private Hospital - Radiation Oncology (Milestone: Masterplan)

Project Products Legend

Fabric

Paint




Product Code				Sample
PNT-3093	Manufacturer: Dulux	\$ per unit:	Selection: Dulux Drive Time PG1 A6	
	Product Name: Paint	Unit:	Remarks: Paint to FC Cladding alternating between windows frames.	
		Availability:	Fire stair enclosure.	
PNT-3094	Manufacturer: Taubmans Paints	\$ per unit:	Selection: Rice Cake PW1 B5	
	Product Name: Paint	Unit:	Remarks: To match Dulux Rice Cake.	
		Availability:	Paint to Exterior walls.	

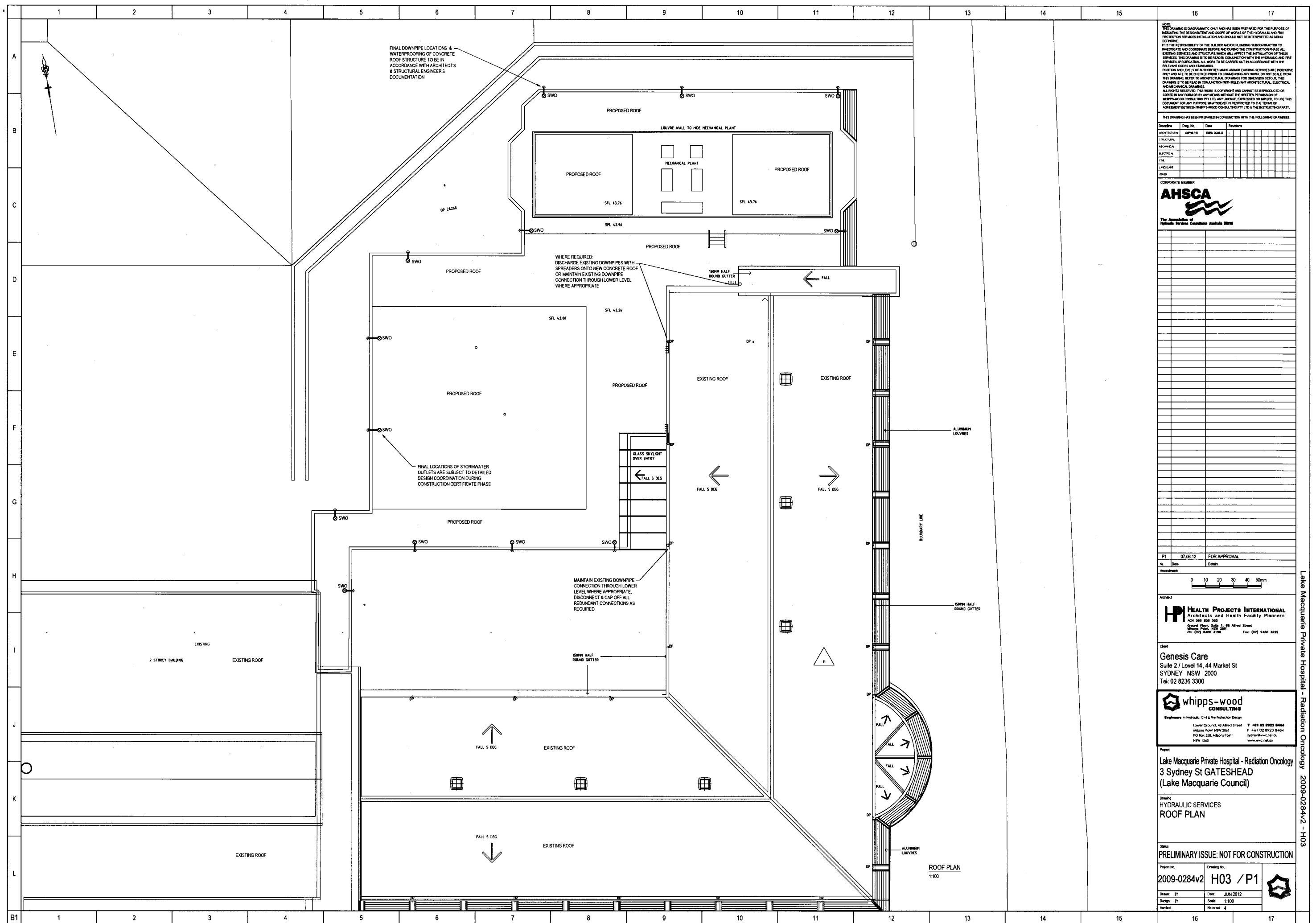
Lake Macquarie Private Hospital - Radiation Oncology (Milestone: Masterplan)

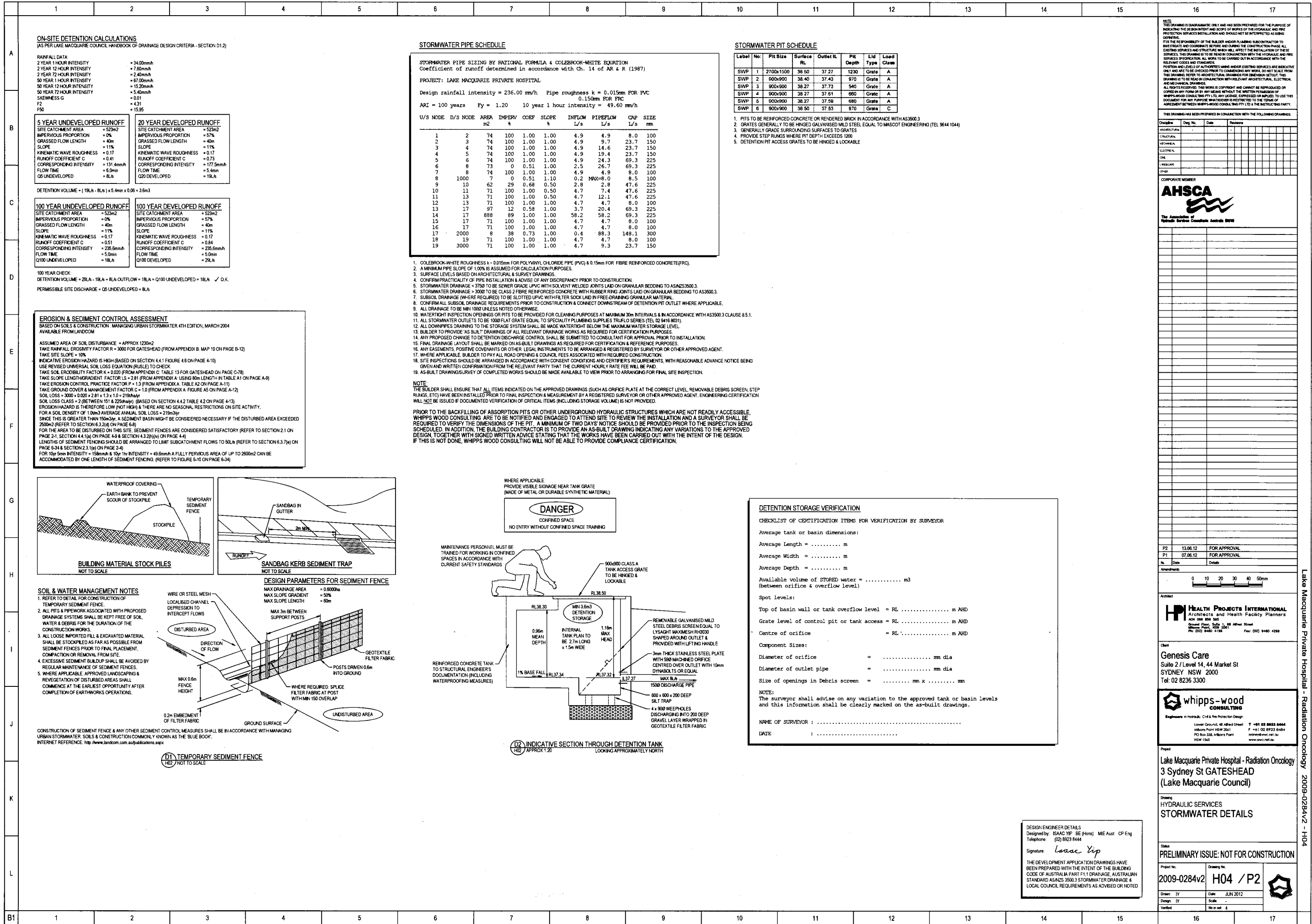
Project Products Legend

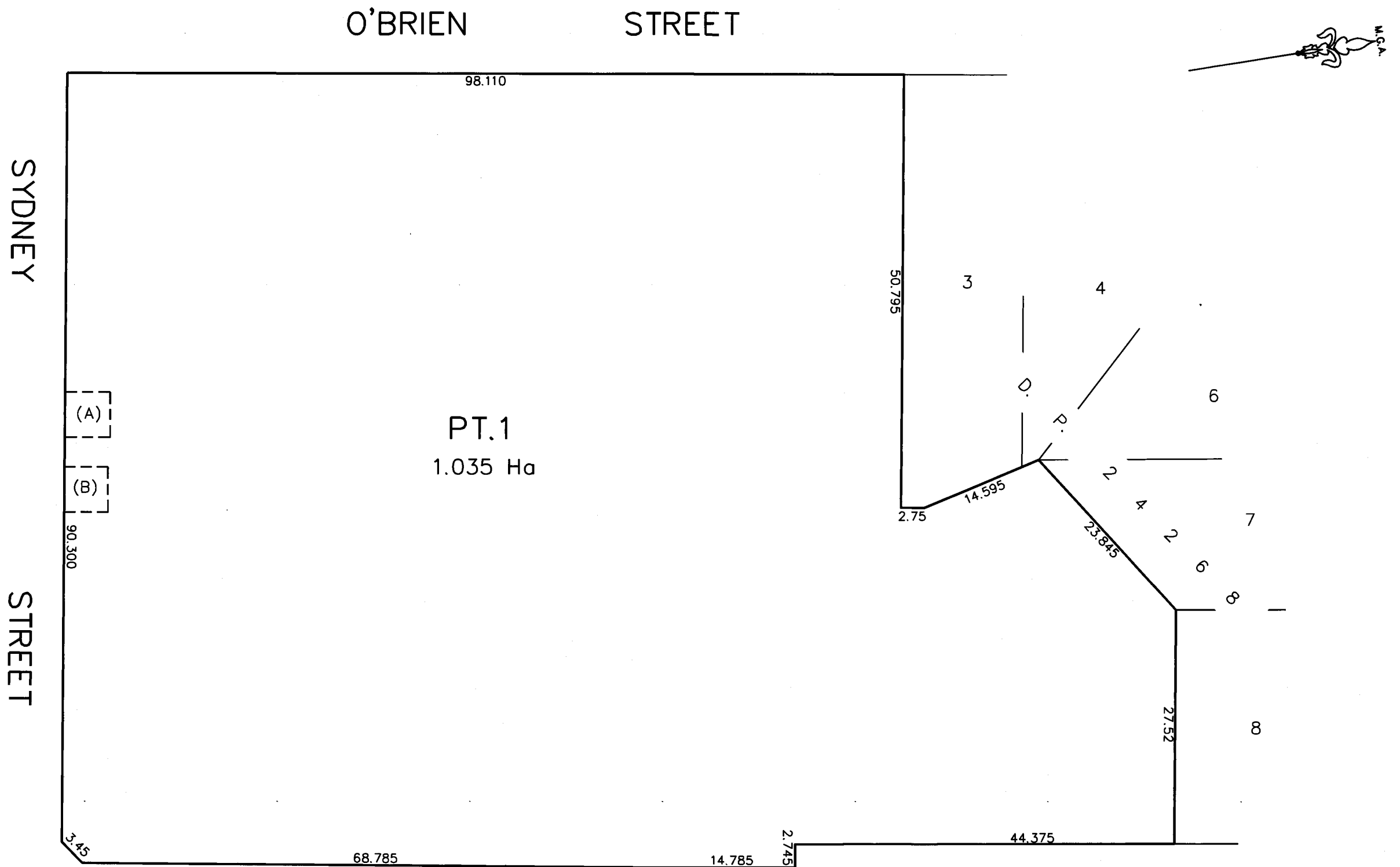
Fabric

Powdercoat paint

Product Code				Sample
PWD-3092	Manufacturer: Dulux	\$ per unit:	Selection: Olde Pewter 50243 Satin	
	Product Name: Powdercoat	Unit:	Remarks: Powdercoat to match Dulux Drive Time.	
		Availability:	Powdercoat to Louvers - Car park.	
PWD-3091	Manufacturer: Dulux	\$ per unit:	Selection: Windspray Matt 85042	
	Product Name: Powdercoat	Unit:	Remarks: External powdercoat colour to Sunshades and Faceted windows.	
		Availability:		
PWD-2977	Manufacturer: Interpon	\$ per unit:	Selection: Charcoal Matt YL 238A	
	Product Name: Ultriva	Unit:	Remarks: External Window frame to all bedrooms.	
		Availability:		







- (A) EASEMENT FOR ELECTRICITY SUBSTATION 5.3 WIDE (D.P.1060815)
 (B) EASEMENT FOR ELECTRICITY PURPOSES 5.5 WIDE (W4076430)

NOTE

LOT 1 COMPRISES THE STRATUM LOT UNLIMITED IN HEIGHT AND DEPTH EXCEPT FOR THE PARTS LIMITED IN DEPTH TO RL.41.43, 42.31 AND 45.0 A.H.D.
 LOT 2 COMPRISES THE STRATUM LOT UNLIMITED IN DEPTH AND LIMITED IN HEIGHT TO RL.41.43, 42.31 AND 45.0 A.H.D.
 AREAS AND DIMENSIONS ARE SUBJECT TO ADJUSTMENT ON FINAL SURVEY

PACIFIC

HIGHWAY



PLAN OF:

PROPOSED SUBDIVISION
 IN STRATUM OF
 LOT 200 DP1060815 AND
 LOT 9 DP24268

PREPARED FOR:

AKALAN PROJECTS PTY LTD
 ATTN: RAPHAEL PULLIN

DRAWN BY: AW

CHECKED BY:

SCALE: 1:500 (A3)

JOB REF: CRH12-375C

DWG FILE: CRH12-375C-SUB-1A

REVISION: A 2/07/2012

SHEET 1 OF 2

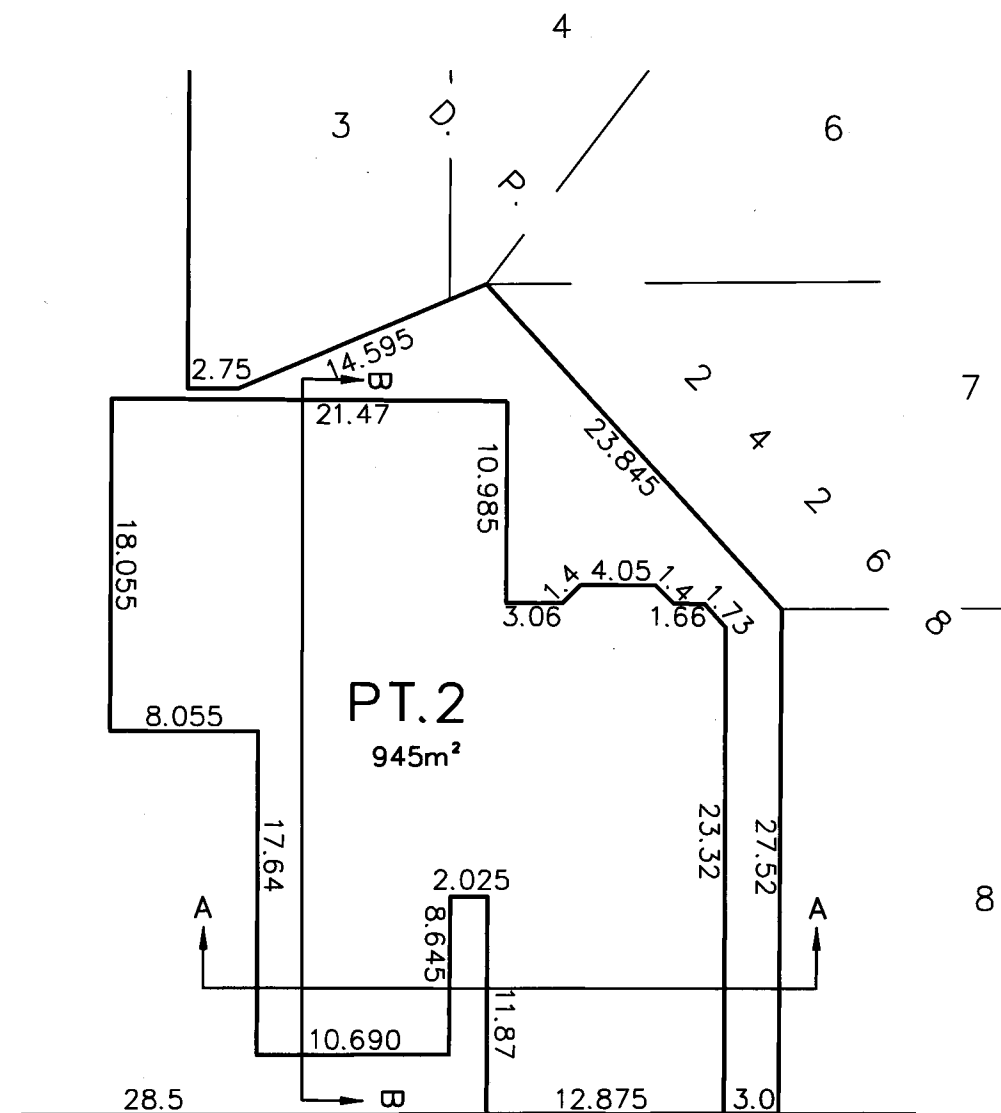
EXCAVATOR/CONTRACTOR/BUILDER

MUST CONTACT
 'DIAL BEFORE YOU
 DIG'
 BEFORE
 COMMENCING WORK
 ON SITE.



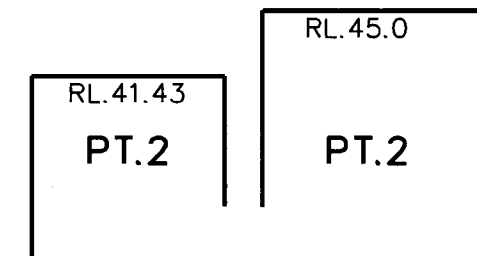


PT.1



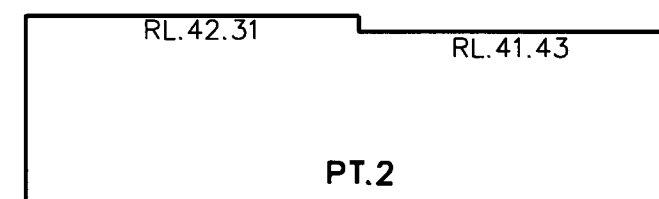
PACIFIC HIGHWAY

PT.1



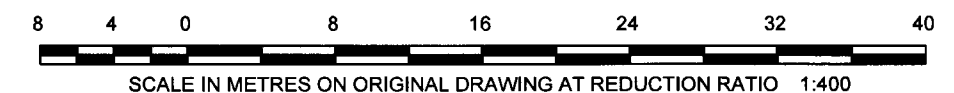
SECTION A-A
1:400

PT.1



SECTION B-B
1:400

AREAS AND DIMENSIONS ARE SUBJECT TO ADJUSTMENT ON FINAL SURVEY



PLAN OF:
PROPOSED SUBDIVISION
IN STRATUM OF
LOT 200 DP1060815 AND
LOT 9 DP24268

PREPARED FOR:
AKALAN PROJECTS PTY LTD
ATTN: RAPHAEL PULLIN

DRAWN BY: AW
CHECKED BY:
SCALE: 1:400 (A3)
JOB REF: CRH12-375C
DWG FILE: CRH12-375C-SUB-1A
REVISION: A 2/07/2012
SHEET 2 OF 2



01 cover page

sept 12 lake macquarie private hospital



drawing schedule

dwg no.	drawing title	issue
8517.5 - DA STAGE 2 - L00	COVER SHEET	D
8517.5 - DA STAGE 2 - L01	LANDSCAPE ANALYSIS	C
8517.5 - DA STAGE 2 - L02	HARDWORKS PLAN	D
8517.5 - DA STAGE 2 - L03	SOFTWORKS PLAN	D
8517.5 - DA STAGE 2 - L04	LANDSCAPE DETAILS	A
8517.5 - DA STAGE 2 - L05	LANDSCAPE SPECIFICATIONS	D



Scale: NTS

rev no:	date:	comments:	by:	verified:	rev no:	date:	comments:	by:	verified:
D	24.06.12	DA	GF	SR					
C	27.06.12	DA	GF	SR					
B	18.06.12	DA	GF	SR					
A	15.06.12	DA	GF	SR					

THE IDEAS, INFORMATION AND CONCEPTS CONTAINED IN THIS DOCUMENT ARE THE PROPERTY OF TERRAS LANDSCAPE ARCHITECTS. PHOTO COPYING OR REPRODUCING THIS DOCUMENT AND PASSING IT ON TO OTHERS WITHOUT THE EXPRESS PERMISSION OF TERRAS LANDSCAPE ARCHITECTS IS AN INFRINGEMENT OF COPYRIGHT AND IS A BREACH OF TERRAS RIGHTS UNDER THE COMMONWEALTH COPYRIGHT ACT OF 1968 [SECTION 10.1].

Scale: 1:1000

PROJECT:
LAKE MACQUARIE PRIVATE HOSPITAL
ADDITION - STAGE 2
CLIENT:
RAMSEY HEALTHCARE PTY LTD

SITE:
CNR SYDNEY ST & PACIFIC HIGHWAY
GATESHEAD
DRAWING:
COVER SHEET

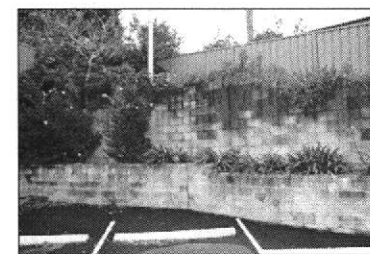
address: 412 king street newcastle nsw 2300 ph: 49 284 926 fax: 49 263 089 www.terras.com.au



WORK TO FIGURED DIMENSIONS IN PREFERENCE TO SCALE. CHECK DIMENSIONS, LEVELS ON SITE PRIOR TO ORDERING MATERIALS OR COMPLETION OF WORKSHOP DRAWINGS.			
drawn:	scale:	no in set:	date:
GF	NTS@A1	0 OF 5	24.09.12
phase:	project no:	DWG no:	revision no:
DA	8517.5	L00	D



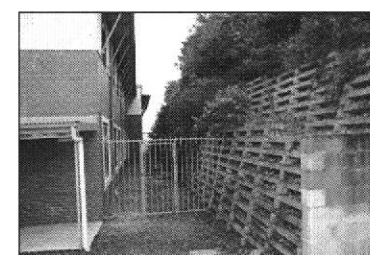
1. View looking east over the Pacific Highway.



6. Existing carpark retaining wall to be removed to accommodate proposed extension.



2. Existing grasses / groundcovers below Brush Box to be removed.



7. Retaining wall south of L 4 DP 24268.



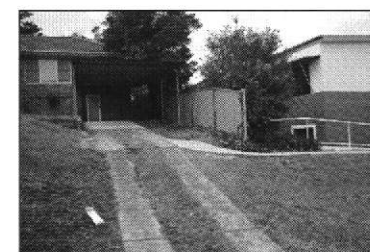
3. Existing Tuckeroo to be removed.



8. View looking north east towards entrance to future car park.



4. Existing Crepe Myrtle to be retained.



9. View looking east towards lot 4 DP 24268 showing location of entry to future carpark.



5. Turfed verge east of L 9 DP 24268 to be landscaped to soften eastern elevation

LANDSCAPE DESIGN REPORT

L 1.0 GENERAL DESCRIPTION

The following landscape design report has been prepared in accordance with the requirements of Development Control Plan No. 1 (including associated guidelines). The site is located within the 3(2) urban centre - support zone as defined by the LMCC LEP 2004. The proposal being a 'medium scale development with potential visual significance and impact on the amenity of the surrounding neighborhood in the 2(2) Residential - urban living zone.

The site extends from within the existing grounds of the Lake Macquarie Private Hospital into the adjoining lots and is located adjacent to the Pacific Highway (ref photo a). The site's topography falls generally to the south eastern corner. Access to the site is currently via both Sydney and Casey Streets which feed onto a minor access road which accesses the site.

L2.0 EXISTING CONDITIONS

Due to its current use as a carpark and residential development existing vegetation on the site is limited to above and between the existing blockwork retaining wall.

The eastern street boundary consists of turf, native grass / groundcover and a variety of trees including Tuckeroos (*Cupaniopsis anacardioides*), Brushbox (*Lophostemon confertus*) and Crepe myrtle (*Lagerstroemia indica*). The proposed development will require the removal of a portion of the existing vegetation to allow for the construction of the proposed building and car access.

The removal of the trees and groundcovers will be offset by replacement planting along the western, northern and eastern boundary.

Views from the site are naturally directed to the east (ref photo b), due to the topography of the site, existing buildings comprising the hospital and the elevated position of the site above the Pacific Highway which lies to the east. Beyond the highway views are of residential dwellings and forested ridgelines. Views to the north and west are obstructed due to the neighboring residence.

The landscape character surrounding the site consists of mainly 1 storey brick and tile residences aligning a busy transport route (the Pacific Highway) merging into commercial and public buildings and facilities which make up the Gateshead town centre.

L3.0 PROPOSED DEVELOPMENT

The proposed development consists of a single storey building being constructed over the existing carpark and into the adjoining northern lot. The existing carpark will be reduced to 22 spaces (with 2 disabled), future development of the adjoining western lot will provide additional spaces. The development provides consultancy rooms and facilities for CT scanning and Radiation oncology.

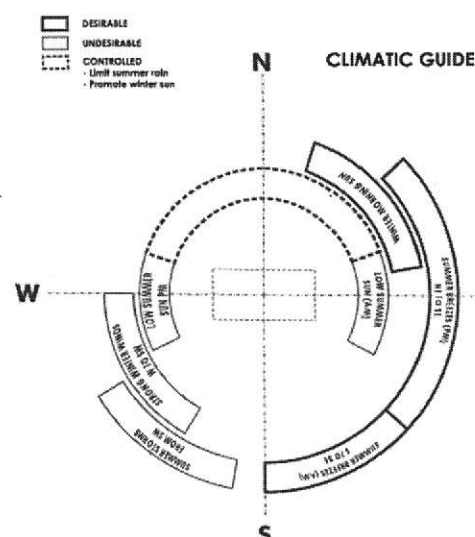
L4.0 DESIGN PRINCIPLES

The landscape design intends to adopt the following principles:

- Removal of 7 existing trees
- 12 new advanced trees
- Mass planting along Old Pacific Hwy of *Lomandra longifolia*, *Lomandra 'Tanika'* and *Grevillea 'Robyn Gordon'* to reflect the existing species palette.
- Shade tolerant mass planting between proposed and existing development *Phyllodendron 'Xanadu'*, *Clivia miniata*, *Molineria capitulata*, *Cyathea cooperi*, *Cycas revoluta*, *Asplenium australasicum*, *Liriope muscari* and *Viola hederacea*.
- Make good existing turf
- Provide small courtyard area outside staff lunch room
- Ensure northern retaining wall is softened using tall plants in conjunction with groundcovers that spill over the wall

01 LANDSCAPE ANALYSIS.

Scale: NTS



02 CLIMATIC GUIDE.

Scale: NTS

rev no:	date:	comments:	by:	verified:	rev no:	date:	comments:	by:	verified:
C	24-09-12	DA		GF	SR				
B	18-06-12	DA		GF	SR				
A	15-06-12	DA		GF	SR				

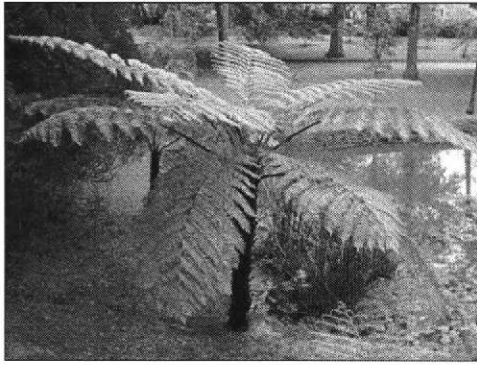
PROJECT:
LAKE MACQUARIE PRIVATE HOSPITAL
ADDITION - STAGE 2
CLIENT:
RAMSEY HEALTHCARE PTY LTD

SITE:
CNR SYDNEY ST & PACIFIC HIGHWAY
GATESHEAD
DRAWING:
SITE ANALYSIS

address: 412 King Street Newcastle NSW 2300 ph: 49 294 926 fax: 49 263 069 www.terras.com.au

terras
landscape architects

drawn:	scale:	no in set:	date:
GF	NTS@A1	1 OF 5	24.09.12
phase:	project no:	DWG no:	revision no:
DA	8517.5	L01	C



Cyathea cooperi



Asplenium australasicum



Cycas revoluta



Grevillea 'Robyn Gordon'



Molineria capitulata



Viola hederacea



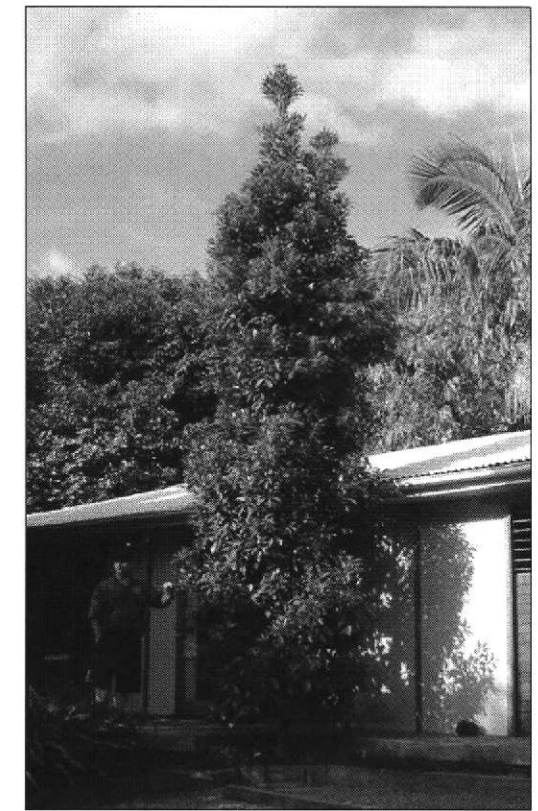
Liriope 'Evergreen Giant'



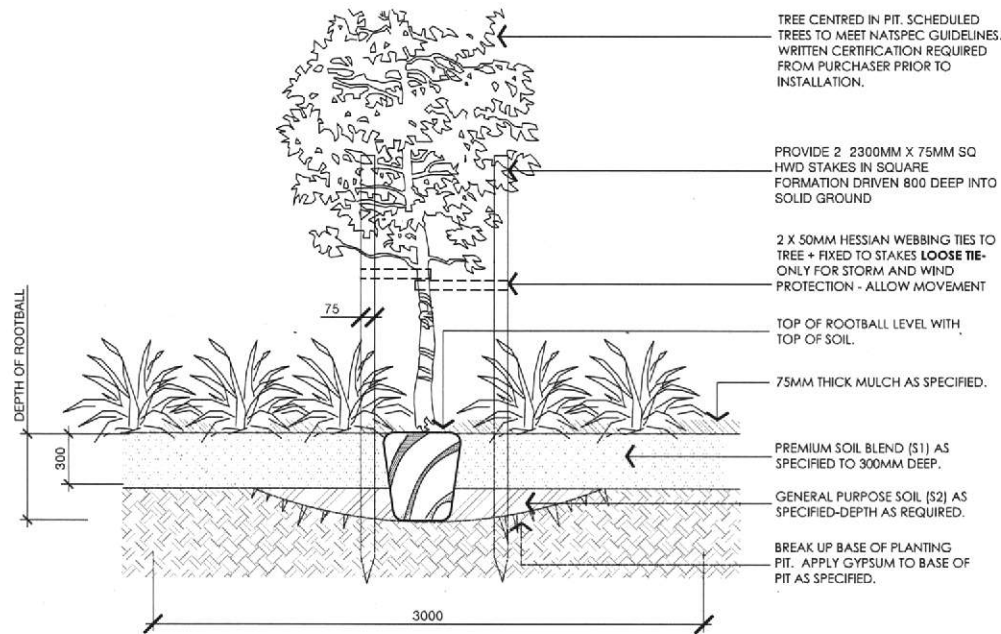
Lomandra longifolia 'Tanika'



Lomandra longifolia

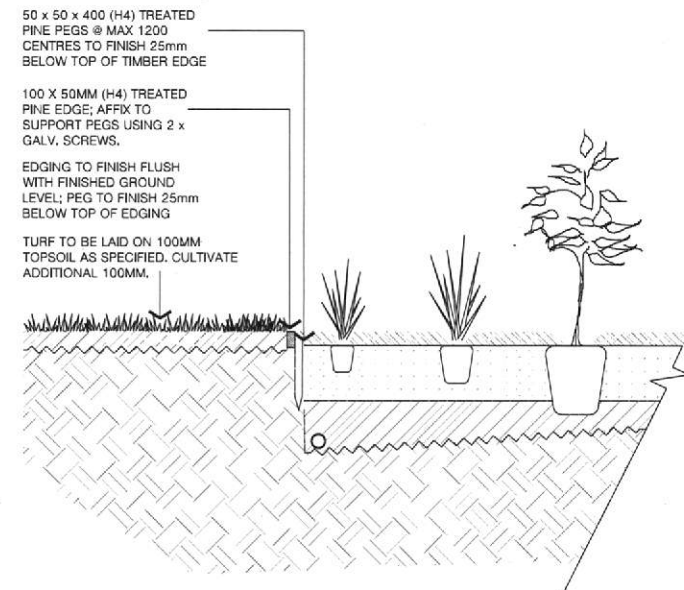


Elaeocarpus eumundi



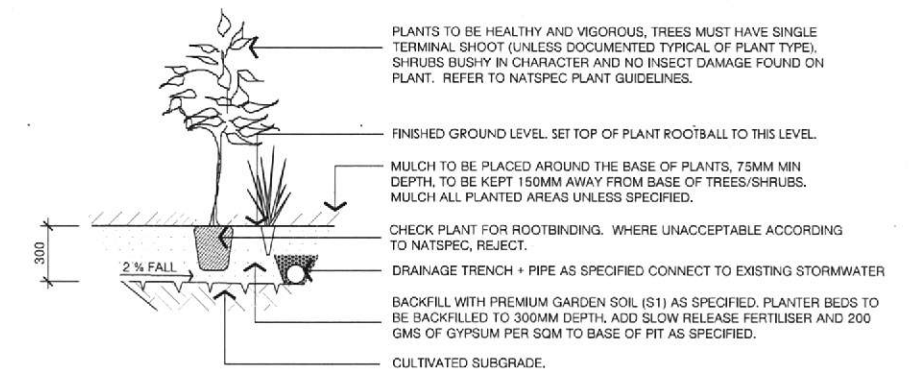
01 TREE IN MASS PLANTING TYPICAL DETAIL

1:20




02 TIMBER EDGE AND TURF TYPICAL DETAIL

1:20



03 MASS PLANTING TYPICAL DETAIL

1:20

	THE IDEAL INFORMATION AND CONCEPTS CONTAINED IN THIS DOCUMENT ARE THE PROPERTY OF TERRAS LANDSCAPE ARCHITECTS. PHOTOGRAPHY OR REPRODUCING THIS DOCUMENT AND PASSING IT ON TO OTHERS WITHOUT THE EXPRESS PERMISSION OF TERRAS LANDSCAPE ARCHITECTS IS AN INFRINGEMENT OF COPYRIGHT AND IS A BREACH OF TERRAS RIGHTS UNDER THE COMMONWEALTH COPYRIGHT ACT OF 1968 (SECTION 19).																																																																																																																																																																																																																																																																																																																																																																																																																																																																																																																																																																																																																																																																																																																																																																																																																																																																																																																																																																																																																																																																																																																																																																																																																																																																																																																																																																										</
---	---	--	--	--	--	--	--	--	--	--	--	--	--	--	--	--	--	--	--	--	--	--	--	--	--	--	--	--	--	--	--	--	--	--	--	--	--	--	--	--	--	--	--	--	--	--	--	--	--	--	--	--	--	--	--	--	--	--	--	--	--	--	--	--	--	--	--	--	--	--	--	--	--	--	--	--	--	--	--	--	--	--	--	--	--	--	--	--	--	--	--	--	--	--	--	--	--	--	--	--	--	--	--	--	--	--	--	--	--	--	--	--	--	--	--	--	--	--	--	--	--	--	--	--	--	--	--	--	--	--	--	--	--	--	--	--	--	--	--	--	--	--	--	--	--	--	--	--	--	--	--	--	--	--	--	--	--	--	--	--	--	--	--	--	--	--	--	--	--	--	--	--	--	--	--	--	--	--	--	--	--	--	--	--	--	--	--	--	--	--	--	--	--	--	--	--	--	--	--	--	--	--	--	--	--	--	--	--	--	--	--	--	--	--	--	--	--	--	--	--	--	--	--	--	--	--	--	--	--	--	--	--	--	--	--	--	--	--	--	--	--	--	--	--	--	--	--	--	--	--	--	--	--	--	--	--	--	--	--	--	--	--	--	--	--	--	--	--	--	--	--	--	--	--	--	--	--	--	--	--	--	--	--	--	--	--	--	--	--	--	--	--	--	--	--	--	--	--	--	--	--	--	--	--	--	--	--	--	--	--	--	--	--	--	--	--	--	--	--	--	--	--	--	--	--	--	--	--	--	--	--	--	--	--	--	--	--	--	--	--	--	--	--	--	--	--	--	--	--	--	--	--	--	--	--	--	--	--	--	--	--	--	--	--	--	--	--	--	--	--	--	--	--	--	--	--	--	--	--	--	--	--	--	--	--	--	--	--	--	--	--	--	--	--	--	--	--	--	--	--	--	--	--	--	--	--	--	--	--	--	--	--	--	--	--	--	--	--	--	--	--	--	--	--	--	--	--	--	--	--	--	--	--	--	--	--	--	--	--	--	--	--	--	--	--	--	--	--	--	--	--	--	--	--	--	--	--	--	--	--	--	--	--	--	--	--	--	--	--	--	--	--	--	--	--	--	--	--	--	--	--	--	--	--	--	--	--	--	--	--	--	--	--	--	--	--	--	--	--	--	--	--	--	--	--	--	--	--	--	--	--	--	--	--	--	--	--	--	--	--	--	--	--	--	--	--	--	--	--	--	--	--	--	--	--	--	--	--	--	--	--	--	--	--	--	--	--	--	--	--	--	--	--	--	--	--	--	--	--	--	--	--	--	--	--	--	--	--	--	--	--	--	--	--	--	--	--	--	--	--	--	--	--	--	--	--	--	--	--	--	--	--	--	--	--	--	--	--	--	--	--	--	--	--	--	--	--	--	--	--	--	--	--	--	--	--	--	--	--	--	--	--	--	--	--	--	--	--	--	--	--	--	--	--	--	--	--	--	--	--	--	--	--	--	--	--	--	--	--	--	--	--	--	--	--	--	--	--	--	--	--	--	--	--	--	--	--	--	--	--	--	--	--	--	--	--	--	--	--	--	--	--	--	--	--	--	--	--	--	--	--	--	--	--	--	--	--	--	--	--	--	--	--	--	--	--	--	--	--	--	--	--	--	--	--	--	--	--	--	--	--	--	--	--	--	--	--	--	--	--	--	--	--	--	--	--	--	--	--	--	--	--	--	--	--	--	--	--	--	--	--	--	--	--	--	--	--	--	--	--	--	--	--	--	--	--	--	--	--	--	--	--	--	--	--	--	--	--	--	--	--	--	--	--	--	--	--	--	--	--	--	--	--	--	--	--	--	--	--	--	--	--	--	--	--	--	--	--	--	--	--	--	--	--	--	--	--	--	--	--	--	--	--	--	--	--	--	--	--	--	--	--	--	--	--	--	--	--	--	--	--	--	--	--	--	--	--	--	--	--	--	--	--	--	--	--	--	--	--	--	--	--	--	--	--	--	--	--	--	--	--	--	--	--	--	--	--	--	--	--	--	--	--	--	--	--	--	--	--	--	--	--	--	--	--	--	--	--	--	--	--	--	--	--	--	--	--	--	--	--	--	--	--	--	--	--	--	--	--	--	--	--	--	--	--	--	--	--	--	--	--	--	--	--	--	--	--	--	--	--	--	--	--	--	--	--	--	--	--	--	--	--	--	--	--	--	--	--	--	--	--	--	--	--	--	--	--	--	--	--	--	--	--	--	--	--	--	--	--	--	--	--	--	--	--	--	--	--	--	--	--	--	--	--	--	--	--	--	--	--	--	--	--	--	--	--	--	--	--	--	--	--	--	--	--	--	--	--	--	--	--	--	--	--	--	--	--	--	--	--	--	--	--	--	--	--	--	--	--	--	--	--	--	--	--	--	--	--	--	--	--	--	--	--	--	--	--	--	--	--	--	--	--	--	--	--	--	--	--	--	--	--	--	--	--	--	--	--	--	--	--	--	--	--	--	--	--	--	--	--	--	--	--	--	--	--	--	--	--	--	--	--	--	--	--	--	--	--	--	--	--	--	--	--	--	--	--	--	--	--	--	--	--	--	--	--	--	--	--	--	--	--	--	--	--	--	--	--	--	--	--	--	--	--	--	--	--	--	--	--	--	--	--	--	--	--	--	--	--	--	--	--	--	--	--	--	--	--	--	--	--	--	--	--	--	--	--	--	--	--	--	--	--	--	--	--	--	--	--	--	--	--	--	--	--	--	--	--	--	--	--	--	--	--	--	--	--	--	--	--	--	--	--	--	--	--	--	--	--	--	--	--	--	--	--	--	--	--	--	--	--	--	--	--	--	--	--	--	--	--	--	--	--	--	--	--	--	--	--	--	--	--	--	--	--	--	--	--	--	--	--	--	--	--	--	--	--	--	--	--	--	--	--	--	--	--	--	--	--	--	--	--	--	--	--	--	--	--	--	--	--	--	--	--	--	--	--	--	--	--	--	--	--	--	--	--	--	--	--	--	--	--	--	--	--	--	--	--	--	--	--	--	----

PROJECT:
LAKE MACQUARIE PRIVATE HOSPITAL
ADDITION - STAGE 2
CLIENT:
RAMSEY HEALTHCARE PTY LTD

address: 412 King Street Newcastle NSW 2300

ph: 49 294 926

fax: 49 263 069

www.terras.com.au

SITE:
CNR SYDNEY ST & PACIFIC HIGHWAY
GATESHEAD
DRAWING:
LANDSCAPE DETAILS

terras
landscape architects

WORK TO FIGURED DIMENSIONS IN PREFERENCE TO SCALE. CHECK DIMENSIONS, LEVELS ON SITE PRIOR TO ORDERING MATERIALS OR COMPLETION OF WORKSHOP DRAWINGS.			
drawn: GF	scale: AS SHOWN	no in set: 4 OF 5	date: 15.06.12
phase: DA	project no: 8517.5	DWG no: L04	revision no: A

